

T202408302 IDIQ - Epoxy Pavement
Markings (District II) Kent and Sussex,
FY25-FY27

MOT CASES

Notes for Figure 6H-17—Typical Application 17
Mobile Operations on a Two-Lane Road
(Delaware Revision)

Standard:

1. **Vehicle-mounted signs shall be mounted in a manner such that they are not obscured by equipment or supplies. Sign legends on vehicle-mounted signs shall be covered or turned from view when work is not in progress.**
2. **Shadow and work vehicles shall display high-intensity rotating, flashing, oscillating, or strobe lights.**
3. **If an arrow board is used, it shall be used in the caution mode.**

Guidance:

4. *Where drivers emerging from an intersecting roadway will not encounter the shadow vehicle prior to the work area, a stationary warning sign should be placed on the intersecting road.*
5. *Where practical and when needed, the work and shadow vehicles should pull over periodically to allow vehicular traffic to pass.*
6. *Whenever adequate stopping sight distance exists to the rear, the shadow vehicle should maintain the minimum distance from the work vehicle and proceed at the same speed. The shadow vehicle should slow down in advance of vertical or horizontal curves that restrict sight distance.*

Option:

7. The minimum distance between the work and shadow vehicles may vary according to terrain, paint drying time, and other factors, such as the manufacturer's recommendations for the truck-mounted attenuator.
8. Additional shadow vehicles to warn and reduce the speed of oncoming or opposing vehicular traffic may be used. Law enforcement vehicles may be used for this purpose.
9. If the work and shadow vehicles cannot pull over to allow vehicular traffic to pass frequently, a DO NOT PASS sign may be placed on the rear of the vehicle blocking the lane.
10. Arrow boards may be omitted from work vehicles that cannot support the installation of an arrow board.

Support:

11. Shadow vehicles are used to warn motor vehicle traffic of the operation ahead.

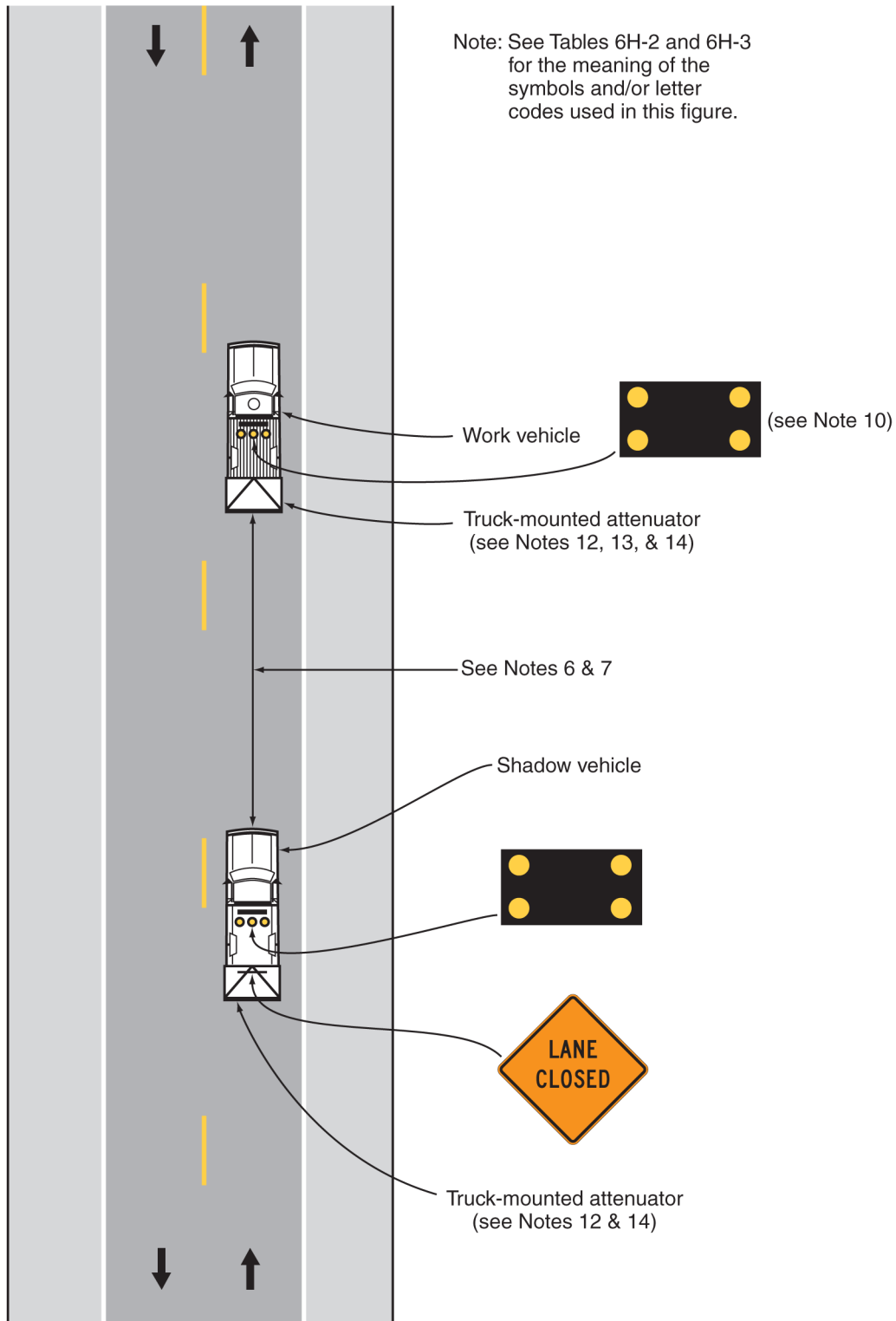
Standard:

12. **Except as provided in Note 13, the work and shadow vehicles shall be equipped with truck-mounted attenuators for mobile operations on roadways with a posted speed limit or 85th-percentile speed greater than 40 mph.**

Option:

13. Truck-mounted attenuators may be omitted from specialized work vehicles, such as sweeper, vacuum, and pothole patching trucks, and other work vehicles that cannot support the installation of a truck-mounted attenuator.
14. Truck-mounted attenuators may be used for mobile operations along roadways with a posted speed limit or 85th-percentile speed less than or equal to 40 mph.

Figure 6H-17. Mobile Operations on a Two-Lane Road (TA-17)
(Delaware Revision)



Typical Application 17

Notes for Figure 6H-17B—Typical Application 17B
Mobile Striping Operations on a Two-Lane Road with a Separate Cone Recovery Convoy
(Delaware Revision)

Standard:

1. A minimum of three vehicles shall be used for the initial mobile striping application convoy and a minimum of two vehicles shall be used for the cone recovery convoy.
2. The cone recovery convoy shall operate in accordance with Figure 6H-17.
3. Flags and/or flashing lights shall be mounted on the gun carriages whenever the carriages extend 1 foot or more beyond the width of the application vehicle.
4. Vehicle-mounted signs shall be mounted in a manner such that they are not obscured by equipment or supplies. Sign legends on vehicle-mounted signs shall be covered or turned from view when work is not in progress.
5. Shadow and application vehicles shall display high-intensity rotating, flashing, oscillating, or strobe lights.
6. If an arrow board is used, it shall be used in the caution mode.

Guidance:

7. *The cone recovery should occur within 1 hour of the initial application or within the corresponding drying time based on ambient temperatures.*
8. *Where drivers emerging from an intersecting roadway will not encounter a shadow vehicle prior to the work area, a stationary warning sign should be placed on the intersecting road.*
9. *Whenever adequate stopping sight distance exists to the rear, the shadow vehicles should maintain the minimum distance from the preceding vehicle and proceed at the same speed. The shadow vehicles should slow down in advance of vertical or horizontal curves that restrict sight distance.*

Option:

10. The minimum distance between the shadow vehicles may vary according to terrain, paint drying time, and other factors, such as the manufacturer's recommendations for the truck-mounted attenuator.
11. Additional shadow vehicles to warn and reduce the speed of oncoming or opposing vehicular traffic may be used. Law enforcement vehicles may be used for this purpose.
12. Arrow boards may be omitted from work vehicles that cannot support the installation of an arrow board.

Support:

13. Shadow vehicles are used to warn motor vehicle traffic of the operation ahead.

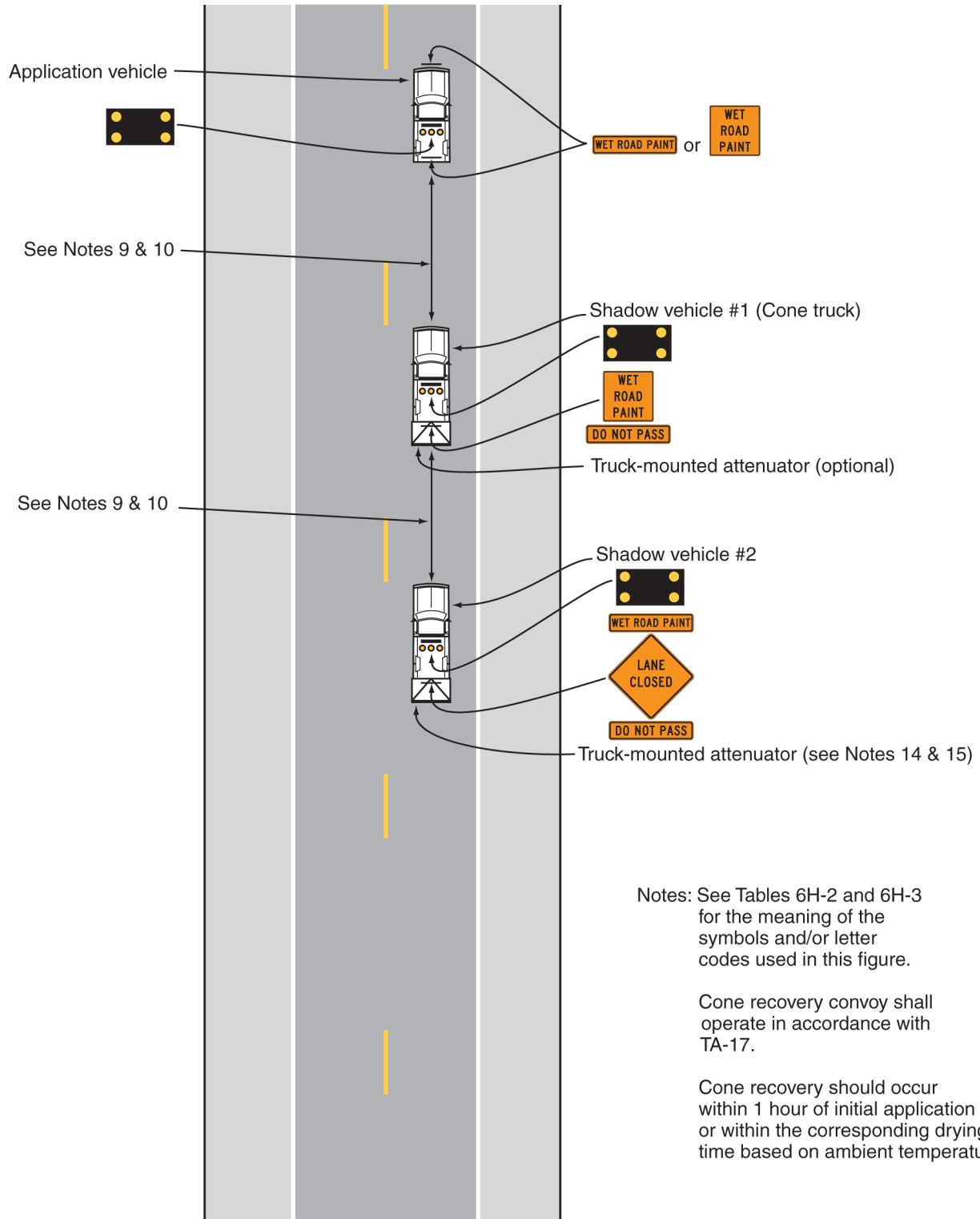
Standard:

14. **Shadow Vehicle 2 shall be equipped with a truck-mounted attenuator for mobile operations on roadways with a posted speed limit or 85th-percentile speed greater than 40 mph.**

Option:

15. Truck-mounted attenuators may be used for mobile operations along roadways with a posted speed limit or 85th-percentile speed less than or equal to 40 mph.
16. Retroreflective cones may be used to supplement mobile striping operations to protect the painted lines.

Figure 6H-17B. Mobile Striping Operations on a Two-Lane Road with a Separate Cone Recovery Convoy (TA-17B)
(Delaware Revision)



Typical Application 17B

Notes for Figure 6H-35—Typical Application 35
Short Duration and Mobile Operations on a Multi-Lane, Divided Highway
with a Single Lane Closure
(Delaware Revision)

Standard:

1. Arrow boards on the shadow vehicles shall, at a minimum, be Type B, with a size of 60 x 30 inches.
2. If used, vehicle-mounted signs shall be mounted in a manner such that they are not obscured by equipment or supplies. Sign legends on vehicle-mounted signs shall be covered or turned from view when work is not in progress.
3. Shadow and work vehicles shall display high-intensity rotating, flashing, oscillating, or strobe lights.
4. An arrow board shall be used when a lane is closed. When more than one lane is closed, a separate arrow board shall be used for each closed lane.
5. When a side road or entrance ramp intersects the highway within the TTC zone, additional TTC devices shall be placed as needed.

Guidance:

6. *Vehicles used for these operations should be made highly visible with appropriate equipment, such as signs or arrow boards.*
7. *Work should normally be accomplished during off-peak hours to the extent practical.*
8. *Whenever adequate stopping sight distance exists to the rear, the shadow vehicles should maintain the minimum distance from the preceding vehicle and proceed at the same speed. The shadow vehicles should slow down in advance of vertical or horizontal curves that restrict sight distance.*

Option:

9. The minimum distance between the shadow vehicles may vary according to terrain and other factors, such as the manufacturer's recommendations for the truck-mounted attenuator.
10. Shadow Vehicle 4 may be used where adequate shoulder width is available to display a portable changeable message sign.

Guidance:

11. *If used, Shadow Vehicle 4 should be located upstream of queued traffic to advise motorists of the potential for stopped vehicles.*

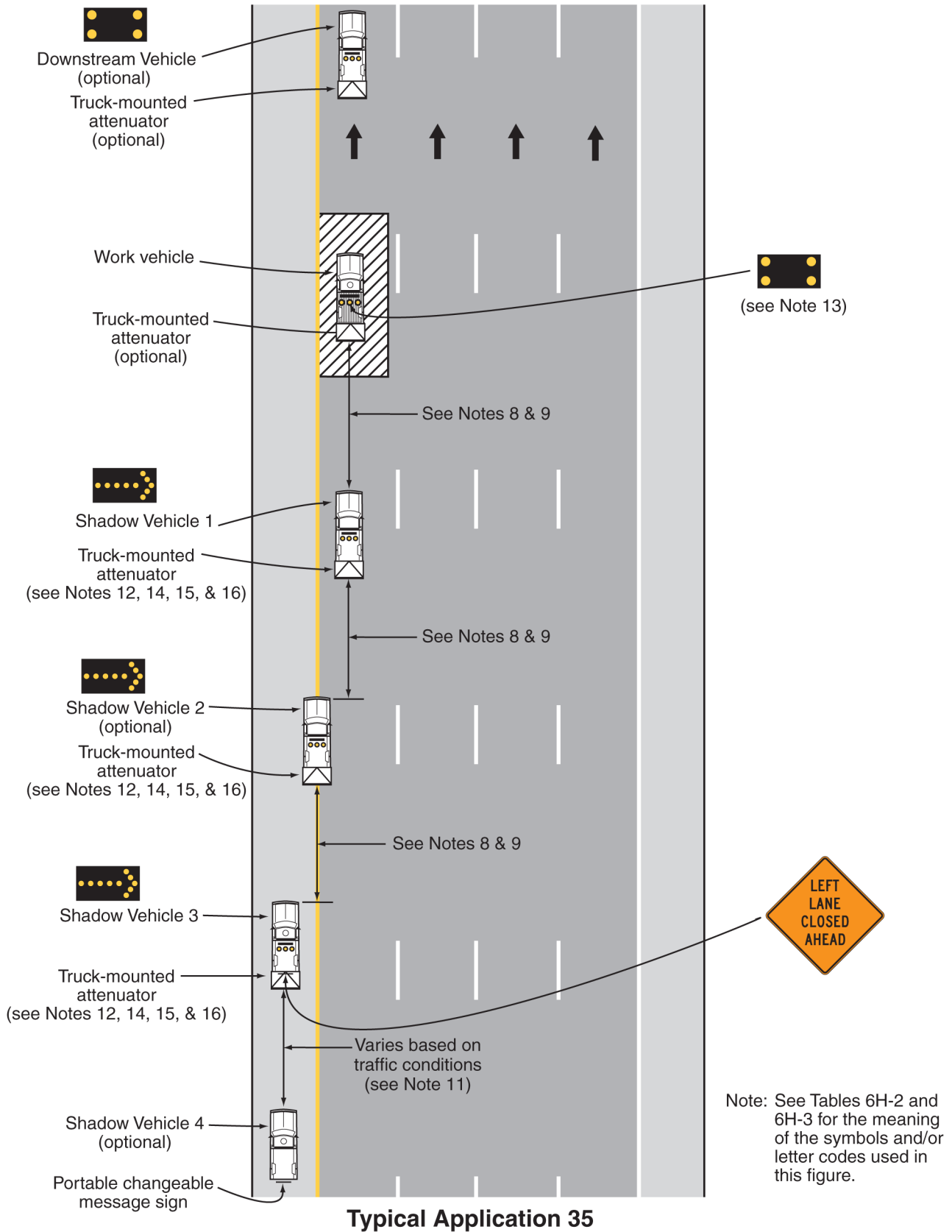
Standard:

12. **Except as provided in Notes 14 and 15 or as denoted as optional in Figure 6H-35, the work and shadow vehicles shall be equipped with truck-mounted attenuators for operations on roadways with a posted speed limit or 85th-percentile speed greater than 40 mph.**

Option:

13. Arrow boards may be omitted from work vehicles that cannot support the installation of an arrow board.
14. Truck-mounted attenuators may be omitted from specialized work vehicles, such as sweeper, vacuum, and pothole patching trucks, and other work vehicles that cannot support the installation of a truck-mounted attenuator.
15. For short duration operations along roadways with a posted speed limit or 85th-percentile speed greater than 40 mph, truck-mounted attenuators may be omitted if a vehicle with activated high-intensity rotating, flashing, oscillating, or strobe lights is used or if the shoulder width is less than the width of a truck-mounted attenuator.
16. Truck-mounted attenuators may be used for all operations along roadways with a posted speed limit or 85th-percentile speed less than or equal to 40 mph.

Figure 6H-35. Short Duration and Mobile Operations on a Multi-Lane, Divided Highway with a Single Lane Closure (TA-35)
(Delaware Revision)



Notes for Figure 6H-35A—Typical Application 35A
Short Duration and Mobile Operations on a Multi-Lane, Divided Highway
with a Double Lane Closure
(Delaware Revision)

Standard:

1. Arrow boards on the shadow vehicles shall, at a minimum, be Type B, with a size of 60 x 30 inches.
2. If used, vehicle-mounted signs shall be mounted in a manner such that they are not obscured by equipment or supplies. Sign legends on vehicle-mounted signs shall be covered or turned from view when work is not in progress.
3. Shadow and work vehicles shall display high-intensity rotating, flashing, oscillating, or strobe lights.
4. An arrow board shall be used when a lane is closed. When more than one lane is closed, a separate arrow board shall be used for each closed lane.
5. When a side road or entrance ramp intersects the highway within the TTC zone, additional TTC devices shall be placed as needed.

Guidance:

6. *Vehicles used for these operations should be made highly visible with appropriate equipment, such as signs or arrow boards.*
7. *Work should normally be accomplished during off-peak hours to the extent practical.*
8. *Shadow Vehicle 1A should be used for stationary short duration operations only.*
9. *Whenever adequate stopping sight distance exists to the rear, the shadow vehicles should maintain the minimum distance from the preceding vehicle and proceed at the same speed. The shadow vehicles should slow down in advance of vertical or horizontal curves that restrict sight distance.*

Option:

10. The minimum distance between the shadow vehicles may vary according to terrain and other factors, such as the manufacturer's recommendations for the truck-mounted attenuator.
11. Shadow Vehicle 6 may be used where adequate shoulder width is available to display a portable changeable message sign.

Guidance:

12. *If used, Shadow Vehicle 6 should be located upstream of queued traffic to advise motorists of the potential for stopped vehicles.*

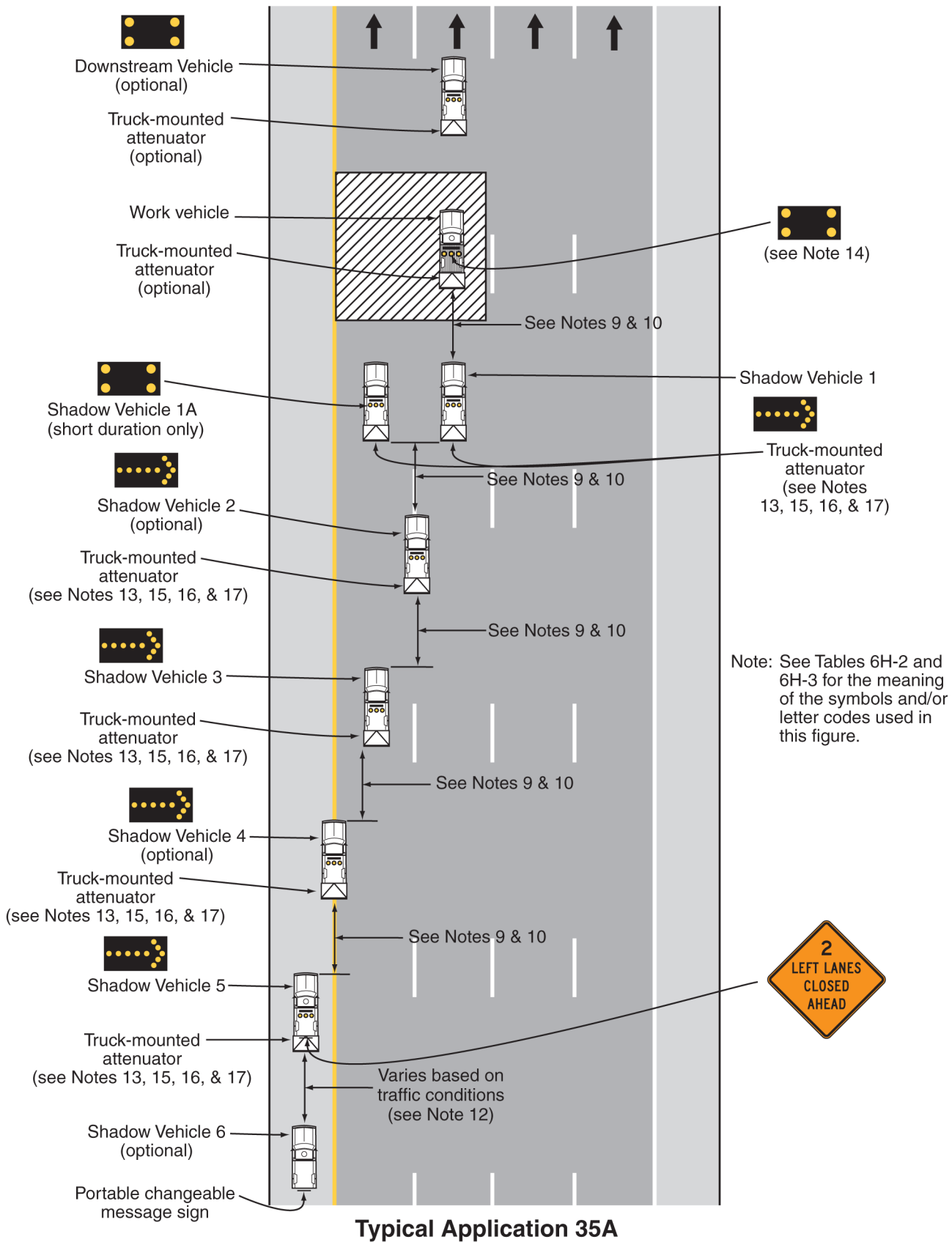
Standard:

13. **Except as provided in Notes 15 and 16 or as denoted as optional in Figure 6H-35A, the work and shadow vehicles shall be equipped with truck-mounted attenuators for operations on roadways with a posted speed limit or 85th-percentile speed greater than 40 mph.**

Option:

14. Arrow boards may be omitted from work vehicles that cannot support the installation of an arrow board.
15. Truck-mounted attenuators may be omitted from specialized work vehicles, such as sweeper, vacuum, and pothole patching trucks, and other work vehicles that cannot support the installation of a truck-mounted attenuator.
16. For short duration operations along roadways with a posted speed limit or 85th-percentile speed greater than 40 mph, truck-mounted attenuators may be omitted if a vehicle with activated high-intensity rotating, flashing, oscillating, or strobe lights is used or if the shoulder width is less than the width of a truck-mounted attenuator.
17. Truck-mounted attenuators may be used for all operations along roadways with a posted speed limit or 85th-percentile speed less than or equal to 40 mph.

Figure 6H-35A. Short Duration and Mobile Operations on a Multi-Lane, Divided Highway with a Double Lane Closure (TA-35A)
(Delaware Revision)



Notes for Figure 6H-35C—Typical Application 35C
Mobile Striping Operations on a Multi-Lane, Divided Highway
with a Separate Cone Recovery Convoy
(Delaware Revision)

Standard:

1. A minimum of three vehicles shall be used for the initial mobile striping application convoy and a minimum of three vehicles shall be used for the cone recovery convoy.
2. The cone recovery convoy shall operate in accordance with Figure 6H-35.
3. Arrow boards on the shadow vehicles shall, at a minimum, be Type B, with a size of 60 x 30 inches.
4. Flags and/or flashing lights shall be mounted on the gun carriages whenever the carriages extend 1 foot or more beyond the width of the application vehicle.
5. Vehicle-mounted signs shall be mounted in a manner such that they are not obscured by equipment or supplies. Sign legends on vehicle-mounted signs shall be covered or turned from view when work is not in progress.
6. Shadow and application vehicles shall display high-intensity rotating, flashing, oscillating, or strobe lights.
7. An arrow board shall be used when a lane is closed. When more than one lane is closed, a separate arrow board shall be used for each closed lane.
8. When a side road or entrance ramp intersects the highway within the TTC zone, additional TTC devices shall be placed as needed.

Guidance:

9. *The cone recovery should occur within 1 hour of the initial application or within the corresponding drying time based on ambient temperatures.*
10. *Vehicles used for these operations should be made highly visible with appropriate equipment, such as signs or arrow boards.*
11. *Work should normally be accomplished during off-peak hours to the extent practical.*
12. *Whenever adequate stopping sight distance exists to the rear, the shadow vehicles should maintain the minimum distance from the preceding vehicle and proceed at the same speed. The shadow vehicles should slow down in advance of vertical or horizontal curves that restrict sight distance.*

Option:

13. The minimum distance between the shadow vehicles may vary according to terrain, paint drying time, and other factors, such as the manufacturer's recommendations for the truck-mounted attenuator.
14. Additional shadow vehicles to warn and reduce the speed of oncoming or opposing vehicular traffic may be used. Law enforcement vehicles may be used for this purpose.
15. Arrow boards may be omitted from work vehicles that cannot support the installation of an arrow board.

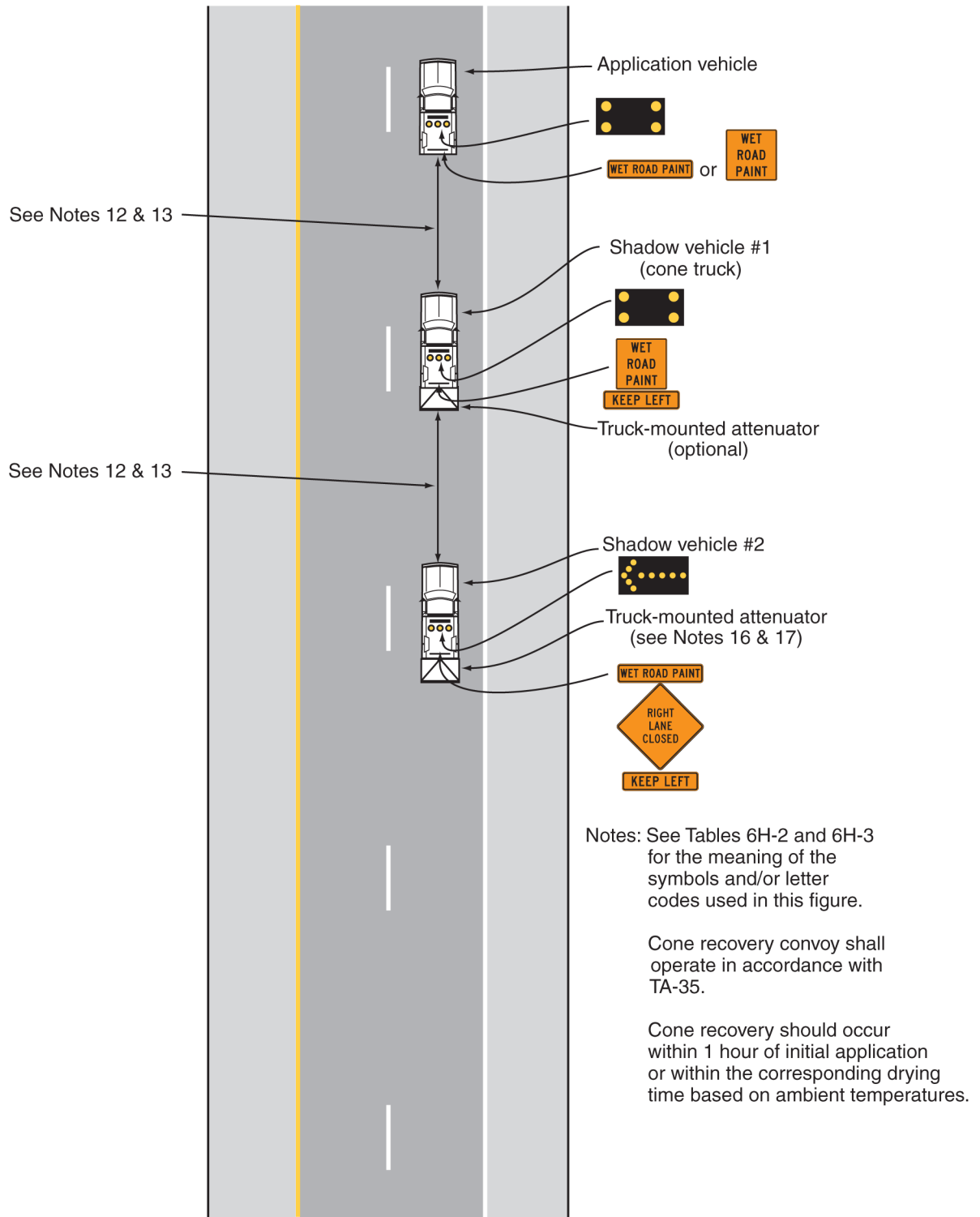
Standard:

16. **Shadow Vehicle 2 shall be equipped with a truck-mounted attenuator for mobile operations on roadways with a posted speed limit or 85th-percentile speed greater than 40 mph.**

Option:

17. Truck-mounted attenuators may be used for mobile operations along roadways with a posted speed limit or 85th-percentile speed less than or equal to 40 mph.

Figure 6H-35C. Mobile Striping Operations on a Multi-Lane, Divided Highway with a Separate Cone Recovery Convoy (TA-35C)
(Delaware Revision)



Typical Application 35C

Notes for Figure 6H-35E—Typical Application 35E
Mobile Striping Operations on an Interstate, Freeway, or Expressway
with a Single Lane Closure and a Separate Cone Recovery Convoy
(Delaware Revision)

Standard:

1. A minimum of three vehicles shall be used for the initial mobile striping application convoy and a minimum of three vehicles shall be used for the cone recovery convoy.
2. The cone recovery convoy shall operate in accordance with Figure 6H-35.
3. Arrow boards on the shadow vehicles shall, at a minimum, be Type B, with a size of 60 x 30 inches.
4. Flags and/or flashing lights shall be mounted on the gun carriages whenever the carriages extend 1 foot or more beyond the width of the application vehicle.
5. Vehicle-mounted signs shall be mounted in a manner such that they are not obscured by equipment or supplies. Sign legends on vehicle-mounted signs shall be covered or turned from view when work is not in progress.
6. Shadow and application vehicles shall display high-intensity rotating, flashing, oscillating, or strobe lights.
7. An arrow board shall be used when a lane is closed. When more than one lane is closed, a separate arrow board shall be used for each closed lane.
8. When a side road or entrance ramp intersects the highway within the TTC zone, additional TTC devices shall be placed as needed.
9. A law enforcement vehicle shall supplement the convoys on interstates, freeways, and expressways.

Guidance:

10. *The cone recovery should occur within 1 hour of the initial application or within the corresponding drying time based on ambient temperatures.*
11. *Closing an interior lane only on a directional roadway with three or more lanes is strongly discouraged because of worker safety and driver expectancy concerns associated with permitting high-speed traffic on both sides of the work space. When an interior lane is closed, an adjacent lane should also be considered for closure.*
12. *Vehicles used for these operations should be made highly visible with appropriate equipment, such as signs or arrow boards.*
13. *Work should normally be accomplished during off-peak hours to the extent practical.*
14. *Whenever adequate stopping sight distance exists to the rear, the shadow vehicles should maintain the minimum distance from the preceding vehicle and proceed at the same speed. The shadow vehicles should slow down in advance of vertical or horizontal curves that restrict sight distance.*

Option:

15. The minimum distance between the shadow vehicles may vary according to terrain, paint drying time, and other factors, such as the manufacturer's recommendations for the truck-mounted attenuator.
16. Arrow boards may be omitted from work vehicles that cannot support the installation of an arrow board.
17. Shadow Vehicle 3 may be used where adequate shoulder width is available to display a portable changeable message sign.

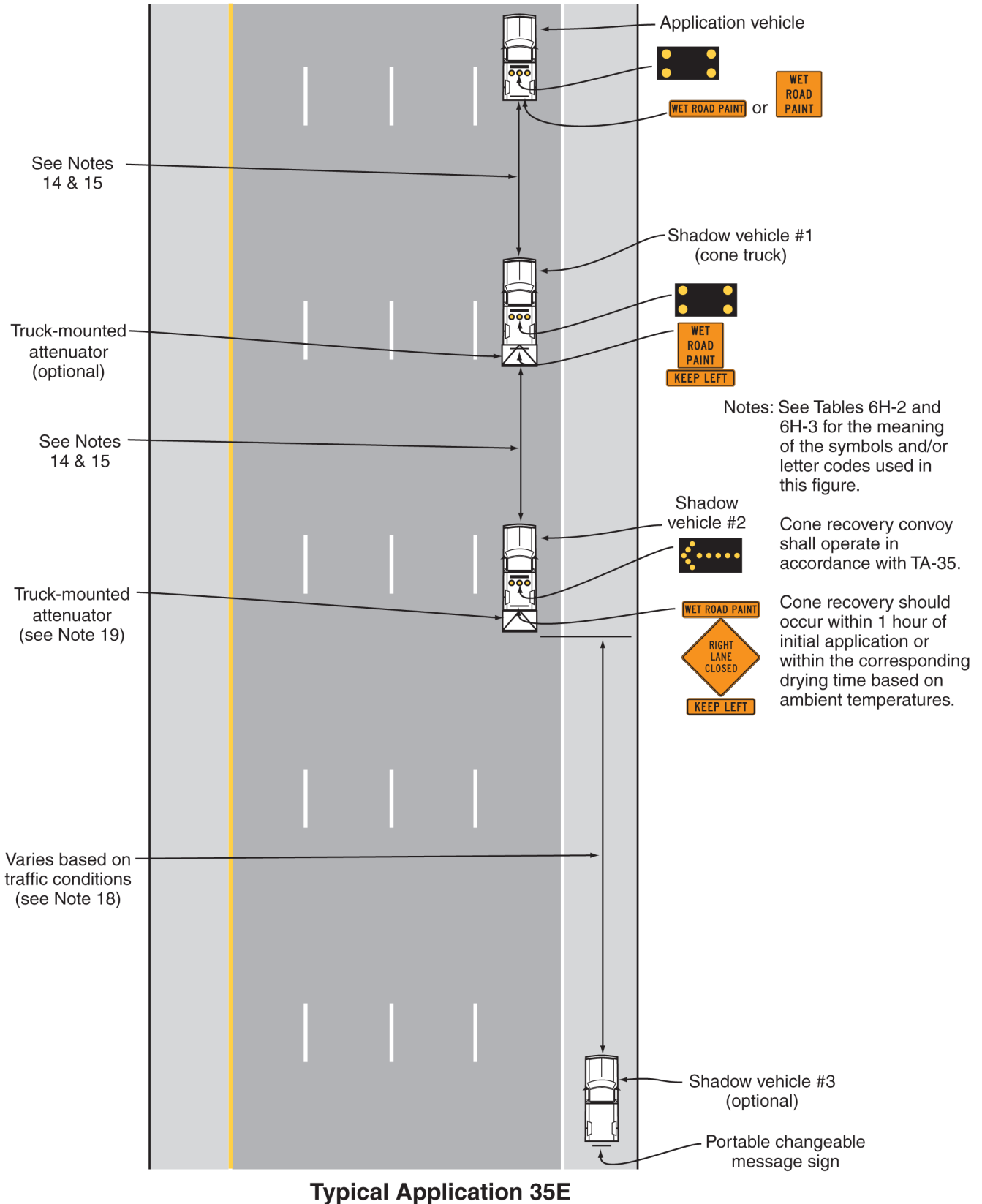
Guidance:

18. *If used, Shadow Vehicle 3 should be located upstream of queued traffic to advise motorists of the potential for stopped vehicles.*

Standard:

19. **Shadow Vehicle 2 shall be equipped with a truck-mounted attenuator for mobile operations on roadways with a posted speed limit or 85th-percentile speed greater than 40 mph.**

Figure 6H-35E. Mobile Striping Operations on an Interstate, Freeway, or Expressway with a Single Lane Closure and a Separate Cone Recovery Convoy (TA-35E) (Delaware Revision)



Notes for Figure 6H-35G—Typical Application 35G
Mobile Striping Operations on an Interstate, Freeway, or Expressway
with a Double Lane Closure and a Separate Cone Recovery Convoy
(Delaware Revision)

Standard:

1. A minimum of four vehicles shall be used for the initial mobile striping application convoy and a minimum of four vehicles shall be used for the cone recovery convoy.
2. The cone recovery convoy shall operate in accordance with Figure 6H-35A.
3. Arrow boards on the shadow vehicles shall, at a minimum, be Type B, with a size of 60 x 30 inches.
4. Flags and/or flashing lights shall be mounted on the gun carriages whenever the carriages extend 1 foot or more beyond the width of the application vehicle.
5. Vehicle-mounted signs shall be mounted in a manner such that they are not obscured by equipment or supplies. Sign legends on vehicle-mounted signs shall be covered or turned from view when work is not in progress.
6. Shadow and application vehicles shall display high-intensity rotating, flashing, oscillating, or strobe lights.
7. An arrow board shall be used when a lane is closed. When more than one lane is closed, a separate arrow board shall be used for each closed lane.
8. When a side road or entrance ramp intersects the highway within the TTC zone, additional TTC devices shall be placed as needed.
9. A law enforcement vehicle shall supplement the convoys on interstates, freeways, and expressways.

Guidance:

10. *The cone recovery should occur within 1 hour of the initial application or within the corresponding drying time based on ambient temperatures.*
11. *Closing an interior lane only on a directional roadway with three or more lanes is strongly discouraged because of worker safety and driver expectancy concerns associated with permitting high-speed traffic on both sides of the work space. When an interior lane is closed, an adjacent lane should also be considered for closure.*
12. *Vehicles used for these operations should be made highly visible with appropriate equipment, such as signs or arrow boards.*
13. *Work should normally be accomplished during off-peak hours to the extent practical.*
14. *Whenever adequate stopping sight distance exists to the rear, the shadow vehicles should maintain the minimum distance from the preceding vehicle and proceed at the same speed. The shadow vehicles should slow down in advance of vertical or horizontal curves that restrict sight distance.*

Option:

15. The minimum distance between the shadow vehicles may vary according to terrain, paint drying time, and other factors, such as the manufacturer's recommendations for the truck-mounted attenuator.
16. Arrow boards may be omitted from work vehicles that cannot support the installation of an arrow board.
17. Shadow Vehicle 4 may be used where adequate shoulder width is available to display a portable changeable message sign.

Guidance:

18. *If used, Shadow Vehicle 4 should be located upstream of queued traffic to advise motorists of the potential for stopped vehicles.*

Standard:

19. **Shadow Vehicles 2 and 3 shall be equipped with truck-mounted attenuators for mobile operations on roadways with a posted speed limit or 85th-percentile speed greater than 40 mph.**

Figure 6H-35G. Mobile Striping Operations on an Interstate, Freeway, or Expressway with a Double Lane Closure and a Separate Cone Recovery Convoy (TA-35G) (Delaware Revision)

